

Sálvora archipelago



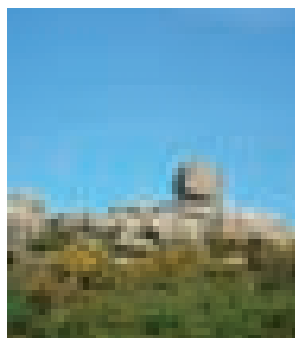
*Beach and Pazo do Almacén,
our welcome to Sálvora.*

Sálvora Island has two marked routes, one with free access and the other that can only be followed by the guides authorized by the National Park, for reasons of safety and conservation.

■ 1. Lighthouse Route (free access).

- Distance: 1.2km
- Duration: 30 minutes (outward bound).
- Maximum Elevation: 24m.
- Signposting colour: Red.
- Main points of interest: Almacén beach, Sálvora's Mermaid, Pazo de Sálvora (country mansion), Lighthouse.

- Description of the route: once at the pier, poster in the National Park shows us, apart from the most important aspects of the regulations, a map of the archipelago, showing the route; on the other side of the path, a panel explains the contents of the self-guided route, which by means of interpretative tables located at strategic points along the way, enables us to discover many of the secrets of this spectacular enclave. A few meters after starting our walk, we come across the wooden walkway that leads to the “Praia do Almacén”, a unique stretch of sand that can be accessed, as the rest are located in reserve areas.

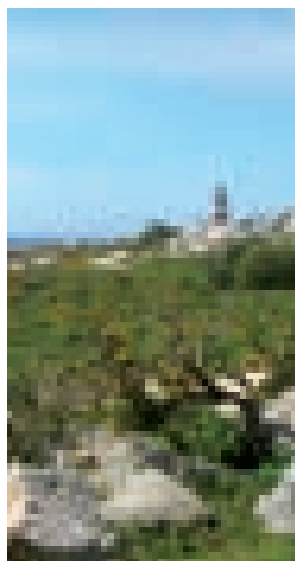


*Sálvora,
an island of sculptures.*

We will later be welcomed by Sálvora’s Mermaid, a sculpture that one of the owners of the island had erected to perpetuate the memory of its noble past. Behind her is the Pazo de Goyanes country mansion, built on a former warehouse for curing and salting fish, and a small chapel, which used to be the tavern where the fishermen got together. We will access the same through a gateway that protects the fragile, valuable dune ecosystem. An ancient cannon, as well as some of the pylons where the fish were deposited in brine and can still be seen inside the country mansion, take us back to bygone days.

Now on the main path, the whims of huge balls of granite can be seen, showing us how harsh life was on the islands, marked by the wind, sand, rain and salt.

Walking around the foot of Mount Gralleiros, with views of Ons to the south even of Cíes on clear days, we come to today’s lighthouse on Sálvora, where the lighthouse keepers still work so that the boats, thanks to the warning sent out by its light, as it has been doing since 1921, the year in which the shipwreck of the steamer Santa Isabel marked the beginning of its career, can safely put into port.



*As it does for seamen,
Sálvora’s lighthouse guides
our way.*

■ 2. Route Village (access with an authorized guide)

- Distance: 1.7Km
- Duration of the route: 40 minutes (outward bound).
- Maximum Elevation: 20m.
- Signposting colour: Blue.
- Main points of interest: Praia do Almacén, Sálvora country mansion and the Mermaid, Village.
- Description of the route: From the pier, we will share the previous route until reaching a fork to the right of the main path, about 400m from the start of the tour. The path climbs gently, allowing us to contemplate the Ria of Arousa from a spectacular new viewpoint, with the imposing rocky islet of Noro in the foreground, followed by Herbosa, Gaivoteira and Vionta, with one of the botanical jewels of the National Park, broom, *Cytisus insularis*.

Halfway along the path, a group of willows indicates that we have reached the Santa Catalina fountain, formerly known as the “Fonte da Telleira” and the most important of the island, which we will see on our left. Just before reaching the village, we can see the old washing place, now an ideal place for breeding and re-



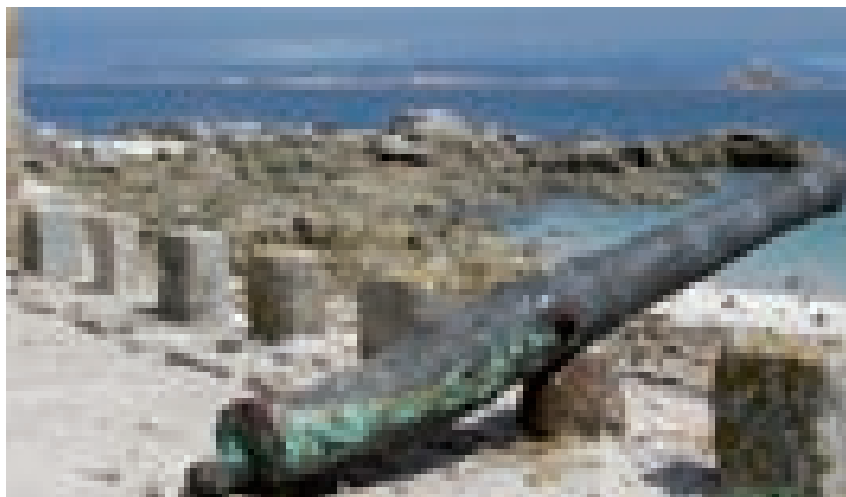
The village of Sálvora, located in a privileged spot.

aring the Iberian newt population on the island. The village, now in a precarious state of preservation, was home to a population of about 60 people, being finally abandoned in the late 70's.

The path continues going around the village, allowing us to wander between the stone granaries where crops are kept that its inhabitants have recently restored. We rejoin the path by which we reached the village, after passing under a canopy of laurels and blackthorn, to go back to the pier in about 30 minutes.



*Stone granaries,
Sálvora pantries.*



*Sálvora and its islets,
sentinels protecting
the Ria of Arousa.*